

# VIEWING THE WORLD THROUGH MULTIPLE FACETS

- The transformative power of perspective

# Why Perspective Matters

The necessity of interweaving multiple perspectives for better risk assessment & Management.

The unpredictability of catastrophic disasters.

Necessity of multiple viewpoints to address diverse challenges.

# Learning from the Past

EXAMINING PAST  
CATASTROPHIC  
EVENTS FOR  
PATTERNS.

THE VALUE OF  
HISTORICAL DATA IN  
PREDICTING  
FUTURE RISKS.

INSURANCE CLAIMS  
AND LOSSES FROM  
NOTABLE PAST  
EVENTS.

# Evolving Perspectives with Technology

---

Advanced modelling  
using scenarios and  
simulations.

Predictive analytics.  
Artificial Intelligence.  
Academic research.

Digital platforms for  
swift claim  
processing post-  
disasters.

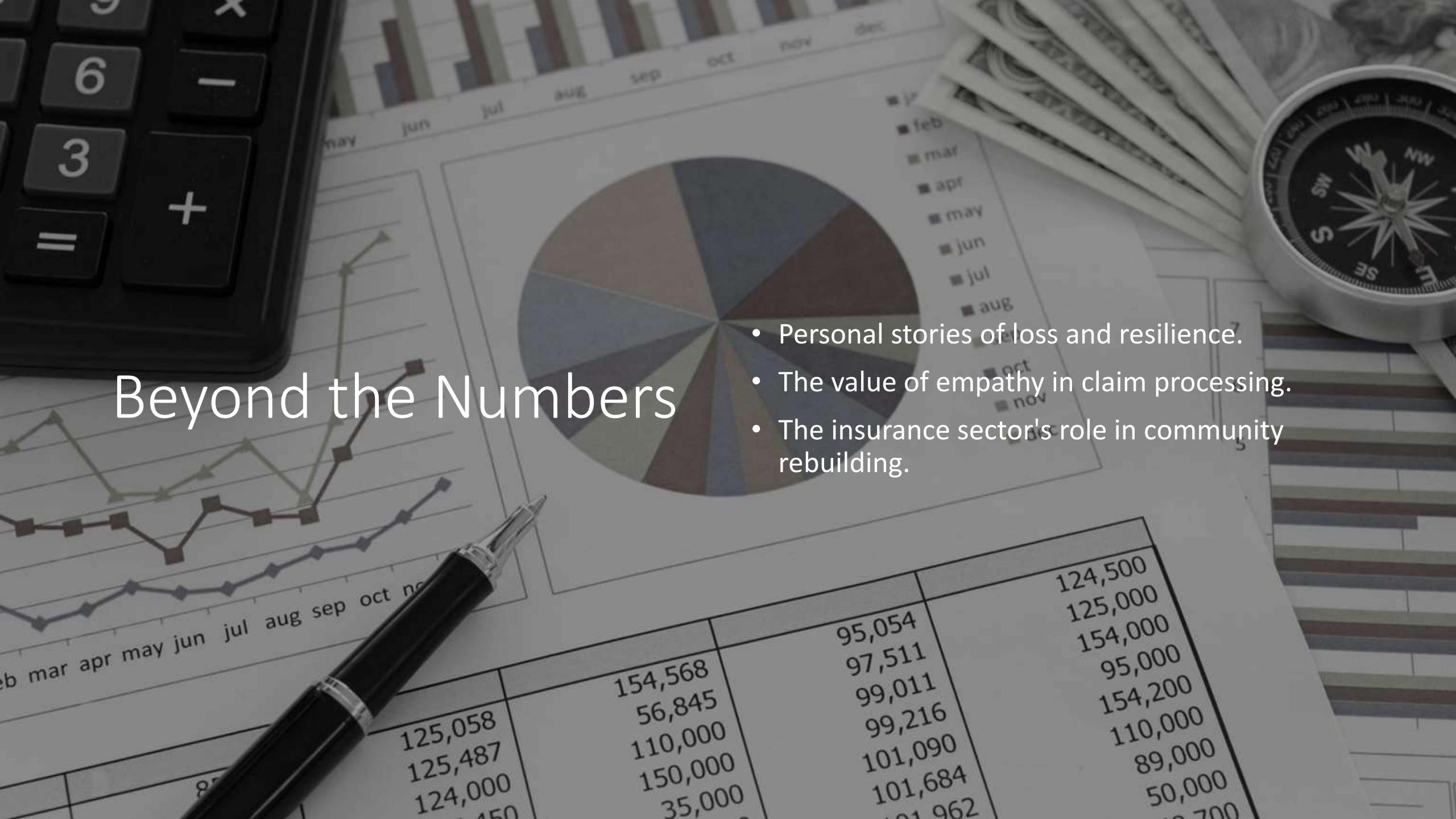


# From Local to Global

- Catastrophic events as global issues affecting supply chains, economies, and migration.
- The role of global insurance partnerships and collaborations.
- Diverse strategies for diverse regional risks.

# Beyond the Numbers

- Personal stories of loss and resilience.
- The value of empathy in claim processing.
- The insurance sector's role in community rebuilding.





# Embracing All Facets

- The necessity of interweaving multiple perspectives for better risk assessment and management.
- The future of the non-life insurance sector amidst increasing global challenges.
- Collective steps towards a safer, better-insured world.



Thank you